

 **3DEXCITE DELTAGEN 2017x**
Installation and licensing instructions

License conditions and copyright

© Dassault Systemes 3DExcite GmbH 2000 - 2016

This documentation and the software it describes are distributed under license only and must not be used or copied except in accordance with the conditions of the associated license agreement. The contents of the manual are for information only and may be modified at any time. Dassault Systemes 3DExcite GmbH („3DEXCITE“) bears no liability. 3DEXCITE is not responsible or liable for any errors or impreciseness in this documentation.

This documentation may only be copied in part or whole, stored in a retrieval system, or transmitted in any other form, in compliance with the license agreement. The documentation must not be transmitted electronically, mechanically, as a recording, or in any other form, without the previous written permission of 3DEXCITE.

3DEXPERIENCE, the Compass icon, the 3DS logo, CATIA, SOLIDWORKS, ENOVIA, DELMIA, SIMULIA, GEOVIA, EXALEAD, 3D VIA, BIOVIA, NETVIBES, 3DSWYM and 3DEXCITE are commercial trademarks or registered trademarks of Dassault Systèmes or its subsidiaries in the United States and/or other countries.

Note that graphics you wish to integrate into a project may in certain circumstances be subject to copyright conditions. The unauthorized integration of graphics into your documents may represent an infringement of the owner’s copyright. Ensure that you first obtain the copyright owner’s permission. Microsoft, MS-DOS, Windows and Windows NT are registered trademarks of the Microsoft Corporation in the USA and other countries. Apple, PowerBook, QuickTime, Macintosh and Power Macintosh are registered trademarks of Apple Computer, Inc. in the USA and other countries. Adobe, the Adobe logo, Acrobat and Acrobat Reader are registered trademarks of Adobe Systems Incorporated. All other product names are registered trademarks of other companies.

3DEXCITE gives no guarantee other than in the accompanying license agreement, either expressly or implicitly, for the sales suitability or competence of a specific application of these materials and provides these materials exclusively in their current form. 3DEXCITE cannot be held liable to any person for accidental or indirect loss or damage arising from the purchase or use of these materials.

All rights for the translation of this publication are held by 3DEXCITE.

3DEXCITE reserves the right to revise or change its products according to its own discretion.

This publication describes the state of this product at the time of its publication and is under no liability to agree with future versions of the product.

DELTAGEN is protected by the US Patent numbers 7,973,790 and 8,013,857; and when used in combination with Siemens PLM Software Teamcenter US Patent number 8,682,464.

Certain portions of the Dassault Systemes 3DExcite GmbH products are based on 3rd party products and are copyrighted by their owner. Please see document “Acknowledgements” in the installer.

This work contains software owned by Siemens Product Lifecycle Management Software Inc. ©1986 - 2013.

JT™ is a trademark owned by Siemens Product Lifecycle Management Software Inc.

What's New?	1
New Functionality	1
DSLS Licensing	1
Related Links and Documents	1
Installation and licensing instructions	2
Prerequisites.	2
System requirements	2
Hardware requirements	3
Monitor resolution	3
Software requirements	3
Additional software	3
Recommended drivers	4
NVIDIA® Control Panel.	4
Installing 3DEXCITE software.	5
Installation procedure	6
Installing other components: for example, DELTAGEN Direct Maya plug-in	8
Installing the Direct Maya plug-in	8
Silent installation and silent removal	9
Installing the FlexLM license manager service	10
Licensing 3DEXCITE software	12
DSLS licensing	12
FlexLM licensing	13
Install a local license (node-locked)	13
Install a server license (floating)	13
Borrowing an 3DEXCITE license	14
Conditions and notes	14
Borrowing licenses	14
Returning licenses	15
Exchanging the license file	15

What's New?

This section describes the new and enhanced functionality in 3DEXCITE DELTAGEN.

New Functionality

DSLS Licensing

3DEXCITE Software is transitioning to the DSLS Licensing system.

For this release we offer two ways to license your 3DEXCITE DELTAGEN software:

- FlexLM licensing (as before)
- DSLS licensing

This licensing system requires setting up a DSLS license server and a DSLS license.

For more information on the setup and on how to obtain a license please refer to the related documentation.

Related Links and Documents

Please go to the *DS Downloads Overview* page and select the following items:

- [Consult DSLS Installation And Configuration Guide](#)
- [Software License Keys terms](#)

Installation and licensing instructions

These instructions provide information on the following topics:

- *Prerequisites*, Page 2
- *NVIDIA® Control Panel*, Page 4
- *Installing 3DEXCITE software*, Page 5
- *Licensing 3DEXCITE software*, Page 12
- *Borrowing an 3DEXCITE license*, Page 14
- *Exchanging the license file*, Page 15

Prerequisites

System requirements

These requirements represent the capacity required to run 3DEXCITE DELTAGEN and 3DEXCITE DELTAVIEW and also for processing the 3D scenes that are loaded.

Only NVIDIA® graphic cards are currently capable of displaying all visual effects and shaders created with 3DEXCITE Software. This cannot be guaranteed with graphics cards from other manufacturers.

DELTAGEN supports the output of a greater color depth for monitors with 10-bit color depth. This is detected automatically if the monitor is connected to the system. For more information visit our website at → <http://support.3dexcite.com/>.

Hardware requirements

Version	Type	Minimum requirements	Recommendation
2017/ 2017x	RAM	3 GB	24 GB
	CPU	Intel® Xeon™ DP or MP, Intel® Core™ 2 Duo / Quad / Extreme	Intel® Xeon™ E5-2670
	GPU	NVIDIA® Quadro K5000 NVIDIA® Quadro K5200	NVIDIA® Quadro K6000 and NVIDIA® Quadro M6000 (plus Quadro-Sync add-on card for Powerwall setup)

Monitor resolution

Version	Component	Minimum requirements	Recommendation
2017/ 2017x	DELTAGEN	1280 x 1024	1920 x 1200

Software requirements

Version	Component	Minimum requirements	Recommendation
2017/ 2017x	DELTAGEN	Windows® 7 (64-bit version) Win Update KB2999226 for Stellar	Windows® 10 x64 (Pro, Enterprise)

Additional software

Version	Component	Minimum requirements
2017/ 2017x	DELTAGEN	Adobe® Flash Player 20 or higher (for DELTAGEN Flash Video Texture, PICTUREBOOK Browser, XPLORE) Apple QuickTime Player (for QuickTimeVR export) Redistributable_VisualStudio2015_VS2015 for Stellar
2017/ 2017x	DELTATEX	Adobe® Flash Player 20 or higher

Recommended drivers

Version	Component	NVIDIA® driver version	Certification document
2017/ 2017x	DELTAGEN	NVIDIA® driver recommendations available on our Software Services website http://support.3dexcite.com/	Available upon request

NVIDIA® Control Panel

To ensure a correct monitor display, use the recommended driver for the graphics card. Under **MANAGE 3D SETTINGS > GLOBAL SETTINGS** select the following **3DEXCITE - COMPATIBLE** options. The settings should look as follows:

Feature	Setting
Ambient Occlusion	Off
Anisotropic filtering	Application-controlled
Anti-aliasing - FXAA	Off
Anti-aliasing - Gamma correction	On
Anti-aliasing - Mode	Application-controlled
Anti-aliasing - Setting	Application-controlled
Anti-aliasing - Transparency	Off
Buffer-flipping mode	Auto-select
CUDA - GPUs	All
Enable overlay	Off
Exported pixel types	Color indexed overlays (8 bpp)
Maximum prerendered frames	Use the 3D application setting
Memory Allocation Policy	As needed
Multi-display/mixed-GPU acceleration	Multiple display performance mode
OpenGL rendering GPU	Auto-select
Optimize for sparse texture performance	None
Power management mode	NVIDIA® driver-controlled
Shader Cache	On
Stereo - Display mode	On-board DIN connector
Stereo - Enable	Off

Feature	Setting
Stereo - Swap eyes	Off
Stereo - swap mode	Application-controlled
Threaded optimization	On
Triple buffering	Off
Vertical sync	Use the 3D application setting
Virtual reality prerendered frames	1

For all NVIDIA® settings not listed here, we recommend that you keep the standard parameters unchanged.

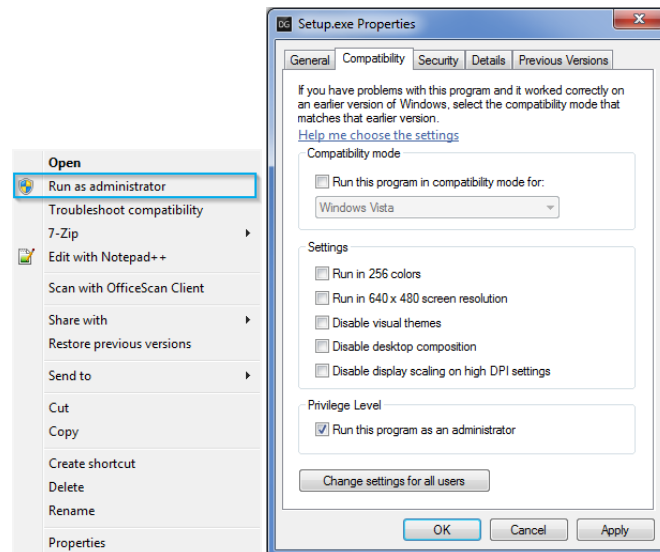
Installing 3DEXCITE software

3DEXCITE software works only with 64-bit Windows® versions. Earlier versions of 3DEXCITE software can remain installed on your PC. If you wish, you can uninstall 3DEXCITE software as follows:

START > ALL PROGRAMS/ALL APPS > DASSAULT SYSTEMES > 3DEXCITE > DELTAGENx.Y > UNINSTALL > UNINSTALL 3DEXCITE SOFTWARE

During installation, write processes take place in the installation directory. You therefore need corresponding write permission. Installation direct from the DVD or from a network location is therefore not possible. We recommend that you copy the installation files to a local drive.

You need Administration rights to carry out the installation. Please note that it is not sufficient to be logged in as Administrator or as a user with administrative rights. We recommend that you select **RUN AS ADMINISTRATOR** from the context menu of the Setup.exe file.



Selecting from the context menu

Setting via PROPERTIES -> COMPATIBILITY tab

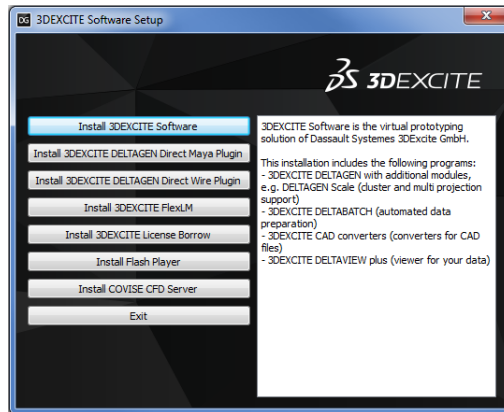
If the computer is a FlexLM license server:

SELECT: **START > ALL PROGRAMS/ALL APPS > DASSAULT SYSTEMES > 3DEXCITE > LICENSING > SHUTDOWN LICENSES** TO EXIT THE FLEXLM LICENSE SERVICE.

Installation procedure

1. RUN THE Setup.exe FILE

You are now being guided through the following installation dialog:



If required, you can install additional contents. Hovering over a selection field, you see information about the contents of the respective package.

2. CLICK A SELECTION FIELD TO START INSTALLATION OF THE CONTENT

After you start installing a package, the installation package is unzipped and the setup wizard opens.

3. CHECK WHETHER YOUR SELECTION IS CORRECT

We recommend that you close all other programs to enable a smooth update of relevant system files without having to reboot the computer.

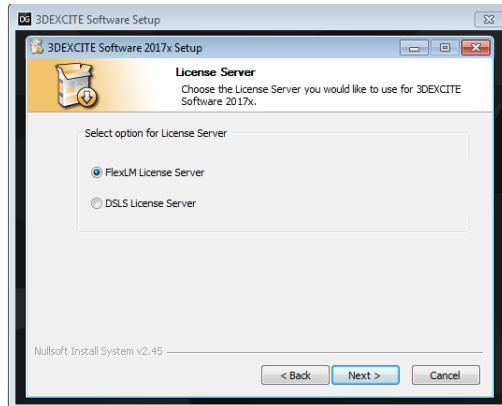
4. CHOOSE WHICH COMPONENTS OF THE 3DEXCITE SOFTWARE YOU WANT TO INSTALL

5. CONFIRM WITH **NEXT >**

You are asked if you want shortcuts to be created on the desktop for the programs you are installing.

6. CONFIRM WITH **YES** OR **NO**

7. SELECT THE LICENSE SERVER YOU WOULD LIKE TO USE



If you chose **DSLS LICENSE SERVER** a message indicates that the DS License Server should be installed separately. Make sure you have the **DSLS LICENSE SERVER** previously installed. For more information please refer to the *DS Downloads Overview* page.

8. SELECT THE INSTALLATION DIRECTORY

We recommend that you accept the suggested `C:\Program Files\Dassault Systemes\3DEXCITE\DELTAGENx.y`, where x.y stands for the program version to be installed. The background to this is the necessity to give standard users without administration rights write access in the program directory, which is not possible in the `C:\Program Files` directory.

If you have selected the 3DEXCITE DELTATEX component, the administration wizard starts during installation.

9. ENTER DETAILS FOR RUNNING 3DEXCITE DELTATEX IMMEDIATELY OR, IF YOU DON'T WANT TO RUN THE WIZARD YET AND CANCEL IT, AT ANY TIME LATER BY STARTING THE WIZARD IN THE PROGRAM MENU:

START > ALL PROGRAMS/ALL APPS > DASSAULT SYSTEMES > 3DEXCITE > DELTAGENx.Y > TOOLS > 3DEXCITE DELTATEX ADMIN

If you have installed the 3DEXCITE software correctly, the closing screen appears.

10. SELECT/DESELECT **SHOW README**

11. CLICK **FINISH**

The starting page of the software setup appears.

A text file containing the latest information on the program opens.

From the starting page of the software setup, you can now install other parts of the software package.



After installing the Microsoft® Visual Studio 2005 Redistribution Package, you may be asked to reboot the system. Reject a reboot since otherwise 3DEXCITE DELTAGEN will not be completely installed.

Installing other components: for example, DELTAGEN Direct Maya plug-in

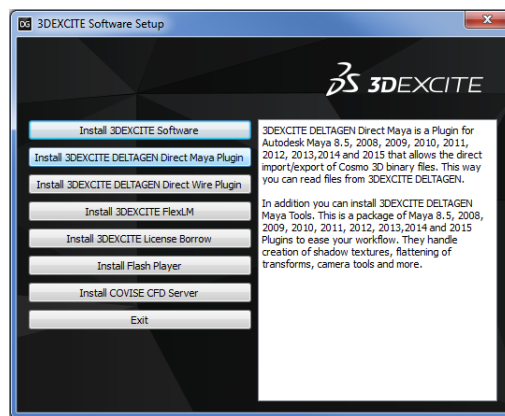
Directly after installing the main program, or after rerunning the `setup.exe` file, you can install other components.



The use of the DirectWire importer requires additional run-time libraries that may require a local installation of the third-party software on the machine or access to the relevant binaries via the network drive. Upon initiation, DELTAGEN searches the default installation directory. Additionally a different location may be defined in the **PREFERENCES** menu.

Installing the Direct Maya plug-in

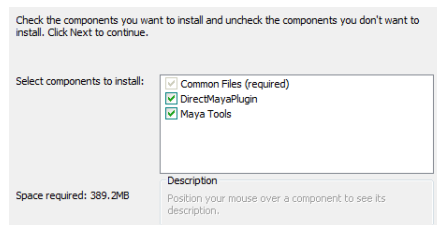
1. HOLD THE MOUSE POINTER OVER THE DIRECT MAYA PLUG-IN SELECTION FIELD TO READ IMPORTANT INFORMATION



2. CLICK THE SELECTION FIELD

The installation package is unzipped and the setup wizard starts.

3. CHOOSE COMPONENTS YOU WANT TO INSTALL



For pre-2013 Autodesk Maya® versions, 2 DLL files have to be exchanged for the plug-in to work. The versions found are marked as being capable of activation. In that case:

4. CHOOSE THE VERSIONS OF AUTODESK MAYA® FOR WHICH THE .DLL SHOULD BE PATCHED

If only Version 2013 or later is installed on the computer, no action is carried out.

5. SET THE INSTALLATION PATH

We recommend the default setting, e.g., `C:\Program Files\Dassault Systemes\3DEXCITE\` for the English-language version of Windows® 7.

The closing screen appears.

6. SELECT **SHOW README**

7. CLICK **FINISH**

You are returned to the starting page of the software setup.

A text file containing the latest information on the plug-in opens.

From the starting page of the software setup, you can now install other parts of the software package.

Silent installation and silent removal

Silent installation of 3DEXCITE Software can be enabled by starting the `Setup.exe` via the following command line options:

`/S` enables silent installation

`/nDB` Do not install DELTABATCH

`/nDCK` Do not install DirectCatiaKinematics

`/nDG` Do not install DELTAGEN

`/nDOCU` Do not install documentation

`/nDT` Do not install DELTATEX (only for 32bit)

`/nDV` Do not install DELTAVIEW

`/nFILE` Do not install File monitor

`/nFLEX` Do not install FlexLM

`/nGEO` Do not install geometries

`/nHUMAN` Do not install Human models

`/nLIGHT` Do not install light setups

`/nLOOK` Do not install Look libraries

`/nMAT` Do not install Material reader

`/nXPLORE` Do not install PICTUREBOOK client

`/nSCALE` Do not install Scale

`/nSURROUNDINGS` Do not install surroundings

`/D=Folder Path` sets 3DEXCITE Software installation folder. This must be the last parameter used in the command line and must not contain any

quotes, even if the path contains spaces! Only absolute paths are supported.

Example:

To silently install 3DEXCITE Software without DELTAVIEW into Folder `D:\Software x.y` run the following command:

```
Setup.exe /S /nDV /D=D:\Software x.y
```

For silent removal start `uninst.exe` in 3DEXCITE Software installation folder with command line option `/S`

Installing the FlexLM license manager service

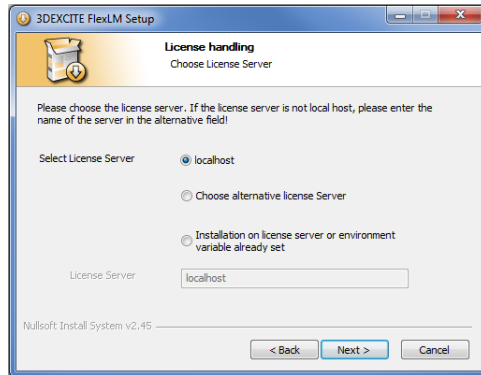
If the selected computer is to manage its 3DEXCITE license itself (as a so-called node-locked license) or as a license server providing the license to other computers in the local network (as a so-called floating license), the 3DEXCITE FlexLM Service must be installed completely.

If the computer is to borrow its license a license server, there is no need for a FlexLM installation. A system variable will be automatically created that needs to be associated with the correct value:

```
portnumber@licenceservername
```

Important information is accessible via mouse over on **3DEXCITE FLEXLM** selection field in the 3DEXCITE Software setup.

1. CLICK THE SELECTION FIELD **INSTALL 3DEXCITE FLEXLM**
2. CLICK **NEXT >**
3. AGREE TO THE TERMS OF THE LICENSE AGREEMENT
4. CLICK **NEXT >**
5. SET HOW THE LICENSE IS TO BE HANDLED:
 - localhost = node-locked license
 - alternative license server
 - no specification, i.e., no new entry for the environment variables, only installation on a computer designated as a license server, or installation for local use if the environment variable does not have to be set any more.

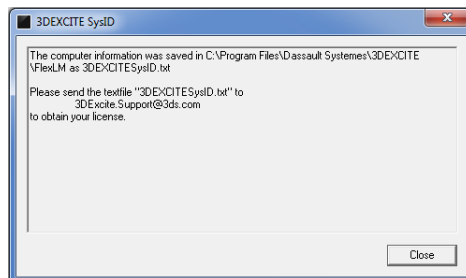


Further procedures: *LOCALHOST*

1. DEFINE THE INSTALLATION PATH TO BE USED, E.G., **C:\Program Files\Dassault Systemes\3DEXCITE\FlexLM** FOR THE ENGLISH-LANGUAGE VERSION OF WINDOWS® 7

The specified folder is also the location for the license file to be generated by 3DEXCITE, which has to be stored precisely there.

During installation of the FlexLM service, the system information necessary for generating the license file is automatically stored in the **3DEXCITESysID.txt** file, which is to stored in the FlexLM folder.



The system variable **RTTLMD_LICENSE_FILE** is created and given the entry **@localhost**.

When the setup is complete, you can view installation details.

Installation is now successfully completed.

2. SELECT **SHOW README**
3. CLICK **FINISH**

You are returned to the starting page of the software setup.

A text file containing the latest information on the FlexLM program opens.

From the starting page of the software setup, you can now install other parts of the software package.

Further procedures:**CHOOSE ALTERNATIVE LICENSE SERVER**

1. FOR **LICENSE SERVER**, ENTER THE NAME OF THE COMPUTER TO BE USED AS THE LICENSE SERVER

This name is stored as a value in the `RTTLMD_LICENSE_FILE` system variable. In this case, be sure to consult your local IT service / system administrator for the corresponding details.

If the access to the license server is via a shared port only (as preset for example in the case of a redundant server system in the license file), this must precede the computer name. In this case:

ADD (MANUALLY) THE VALUE OF THE SYSTEM VARIABLE AT THIS PLACE, IN THE FOLLOWING FORMAT: `portnumber@licenceservername`

Further procedures:**INSTALLATION ON LICENSE SERVER OR ENVIRONMENT VARIABLE ALREADY SET**

→ *Further procedures: LOCALHOST*, Page 11

Here, only the service is installed without making an entry for the `RTTLMD_LICENSE_FILE` system variable.

Licensing 3DEXCITE software

In order to be able to use this 3DEXCITE software, you need a license issued by 3DEXCITE or alternatively a DSLS license.

There are two types of licenses:

- Local licenses (node-locked)
- Server licenses (floating)

For licensing and all further configuration steps, you need administration rights.

DSLS licensing

For DSLS licensing please refer to → *Software License Keys terms*.

The following steps refer to FlexLM licensing only!

FlexLM licensing

Install a local license (node-locked)

1. INSTALL THE FLEXLM SOFTWARE IN THE *LOCALHOST* VARIANT

During installation, a unique system ID (SysID) is created as a text file with the name *3DEXCITESysID.txt*. The path in which this file is located is the FlexLM installation path.

2. SEND AN E-MAIL WITH THE GENERATED FILE *3DEXCITESysID.txt* AS AN ATTACHMENT TO *3DEXCITE.Support@3ds.com*

You will receive your license by e-mail as a file. The general license is *RTTLMD.lic*.

3. SAVE THESE FILES TO THE LICENSE DIRECTORY, WHICH YOU CAN OPEN BY SELECTING THE FOLLOWING: ***START > ALL PROGRAMS/ALL APPS > DASSAULT SYSTEMES > 3DEXCITE > DELTAGENx.Y > LICENSING > LICENSE FOLDER***
4. SELECT ***START > ALL PROGRAMS/ALL APPS > DASSAULT SYSTEMES > 3DEXCITE > DELTAGENx.Y > LICENSING > START LICENSES***

This completes the licensing of the 3DEXCITE software.



The following environment variable was set in the *LOCALHOST* installation type on the system: *RTTLMD_LICENSE_FILE*

This contains information showing where the license is stored. You can view and edit these settings in the advanced system settings. If you have any questions, consult your IT Support.

Install a server license (floating)

1. INSTALL THE FLEXLM SOFTWARE ON THE SERVER

During installation, a unique system ID (SysID) is created as a text file with the name *3DEXCITESysID.txt*.

The path in which this file is located is the FlexLM installation path.

2. SEND THE GENERATED FILE *3DEXCITESysID.txt* TO *3DEXCITE.Support@3ds.com*

You will receive the license as a file by e-mail.

The general license is *RTTLMD.lic*.

3. SAVE THESE FILES TO THE LICENSE DIRECTORY, WHICH YOU CAN OPEN BY SELECTING THE FOLLOWING:

START > ALL PROGRAMS/ALL APPS > DASSAULT SYSTEMES > 3DEXCITE > DELTAGENx.Y > LICENSING > LICENSE FOLDER

4. INSTALL THE 3DEXCITE SOFTWARE ON THE WORKSTATIONS.
5. DEFINE THE FOLLOWING ENVIRONMENT VARIABLE ON THE WORKSTATIONS: *RTTLMD_LICENSE_FILE* IF THIS HAS NOT ALREADY BEEN DONE DURING

INSTALLATION UNDER **INSTALL 3DEXCITE FLEXLM** - VARIANT **CHOOSE ALTERNATIVE LICENSE SERVER**

The value of every environment variable is `portnumber@licenceservername`,

where specifying the port number is optional if the license file already contains a corresponding entry (e.g. in the case of a redundant server system).



With the `FLEXLM_TIMEOUT` system variable, you can define how long the search for licenses takes. If the searched-for licenses are not available, you can use this system variable to shorten the startup time of DELTAGEN and DELTAVIEW plus.

Values are specified in milliseconds between 0 and 2,147,483,647. If the variable is not set, 100,000 milliseconds, i.e. 100 seconds, are set as the waiting time.

Borrowing an 3DEXCITE license

With 3DEXCITE License Borrow, you can borrow a license from a server (floating server license). This is possible for both DELTAGEN and other modules and plug-ins.

Conditions and notes

- **3DEXCITE LICENSE BORROW** has to be installed directly onto the machine that will borrow the license. It does not have to be installed on the server too.
- The **FLEXLM** service does not have to be installed on the local computer!
- Only licenses stored in the license file of the server can be borrowed.
- The borrowing applies only to the registered user name, for example, the license is available only to this user name following request and activation on the PC.
- The license server must be reachable for the borrowing and return procedures.
- The licenses can be borrowed for up to 31 days.
- After borrowing, the borrowed license is no longer available on the server until it is returned.

Borrowing licenses

1. START THE BORROWING PROCESS IN THE PROGRAM MENU **START > ALL PROGRAMS/ALL APPS > DASSAULT SYSTEMES > 3DEXCITE > DELTAGENx.Y > TOOLS > 3DEXCITE LICENSE BORROW**

The dialog box lists all programs, modules, plug-ins, and converters supported by the 3DEXCITE software.

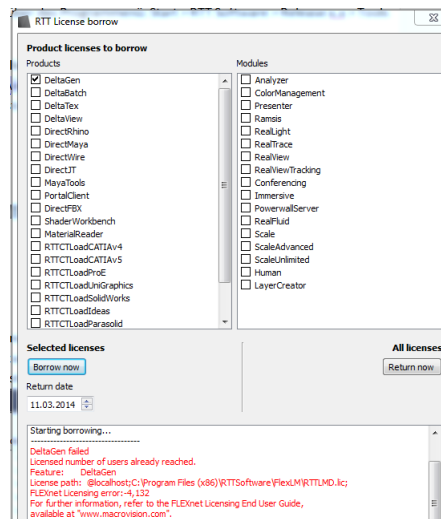
2. CLICK A SELECTION BOX TO SELECT A PRODUCT OR MODULE (CLICK AGAIN TO DESELECT IT)
3. SET THE RETURN DATE FOR THE LICENSE(S) (MAX. 31 DAYS IN THE FUTURE, DEFAULT THE NEXT DAY)
4. SELECT **BORROW NOW** TO START BORROWING THE SELECTED LICENSES.



Whether or not a license will actually run depends on whether the selected component has been installed on the local computer!

If borrowing is successful, this is confirmed in the info box.

If no license is available, this is shown with an error message:



At program start, you are informed for how long the license is still available.

Returning licenses

1. START THE RETURN PROCESS IN THE PROGRAM MENU: **START > ALL PROGRAMS/ ALL APPS > DASSAULT SYSTEMES > 3DEXCITE > DELTAGENx.y > TOOLS > 3DEXCITE LICENSE BORROW**
2. CLICK **RETURN NOW** TO RETURN ALL BORROWED LICENSES BEFORE EXPIRY OF THE RETURN DATE. A SELECTIVE RETURN IS NOT POSSIBLE.

Following expiry of the return date, the license is automatically available on the license server without the user having to return it.

Exchanging the license file

In case you get a new license file, either for the server or the local machine, you can do the exchange of the license on the running system.

1. OPEN THE FLEXLM FOLDER.

By default this is found under C:\Program Files\Dassault Systemes\3DEXCITE\DELTAGENx.y\FlexLM

2. COPY THE NEW RTTLMD LICENSE FILE INTO THE FLEXLM FOLDER, OVERWRITING THE EXISTING ONE.
3. SHUTDOWN THE LICENSES WITH **shutdown_licenses.bat** (RUN AS ADMINISTRATOR) IN THAT FOLDER OR VIA **START > ALL PROGRAMS/ALL APPS > DASSAULT SYSTEMES > 3DEXCITE > DELTAGENx.Y > LICENSING > SHUTDOWN LICENSES**
4. START THE SERVICES WITH **start_licenses.bat** (RUN AS ADMINISTRATOR) OR VIA **START > ALL PROGRAMS/ALL APPS > DASSAULT SYSTEMES > 3DEXCITE > DELTAGENx.Y > LICENSING > START LICENSES**

Again a prompt appears. The license server is now up and running again.