

3DEXCITE DELTAGEN 13.0

Installation and licensing instructions



License conditions and copyright

© Dassault Systemes 3DExcite GmbH 2000 - 2015

This documentation and the software it describes are distributed under license only and must not be used or copied except in accordance with the conditions of the associated license agreement. The contents of the manual are for information only and may be modified at any time. Dassault Systemes 3DExcite GmbH („3DEXCITE“) bears no liability. 3DEXCITE is not responsible or liable for any errors or impreciseness in this documentation.

This documentation may only be copied in part or whole, stored in a retrieval system, or transmitted in any other form, in compliance with the license agreement. The documentation must not be transmitted electronically, mechanically, as a recording, or in any other form, without the previous written permission of 3DEXCITE.

3DEXPERIENCE, the Compass icon, the 3DS logo, CATIA, SOLIDWORKS, ENOVIA, DELMIA, SIMULIA, GEOVIA, EXALEAD, 3D VIA, BIOVIA, NETVIBES, 3DSWYM and 3DEXCITE are commercial trademarks or registered trademarks of Dassault Systèmes or its subsidiaries in the United States and/or other countries.

Note that graphics you wish to integrate into a project may in certain circumstances be subject to copyright conditions. The unauthorized integration of graphics into your documents may represent an infringement of the owner's copyright. Ensure that you first obtain the copyright owner's permission. Microsoft, MS-DOS, Windows and Windows NT are registered trade marks of the Microsoft Corporation in the USA and other countries. Apple, PowerBook, QuickTime, Macintosh and Power Macintosh are registered trade marks of Apple Computer, Inc. in the USA and other countries. Adobe, the Adobe logo, Acrobat and Acrobat Reader are registered trade marks of Adobe Systems Incorporated. All other product names are registered trade marks of other companies.

3DEXCITE gives no guarantee other than in the accompanying license agreement, either expressly or implicitly, for the sales suitability or competence of a specific application of these materials and provides these materials exclusively in their current form. 3DEXCITE cannot be held liable to any person for accidental or indirect loss or damage arising from the purchase or use of these materials.

All rights for the translation of this publication are held by 3DEXCITE.

3DEXCITE reserves the right to revise or change its products according to its own discretion.

This publication describes the state of this product at the time of its publication and is under no liability to agree with future versions of the product.

DELTAGEN is protected by the US Patent numbers 7,973,790 and 8,013,857; and when used in combination with Siemens PLM Software Teamcenter US Patent number 8,682,464.

Certain portions of the Dassault Systemes 3DExcite GmbH are based on 3rd party products and are copyrighted by their owner. Please see document "Acknowledgement" in the installer.

Installation and licensing instructions

These instructions provide information on the following topics:

- *Prerequisites*, Page 1
- *NVIDIA Control Panel*, Page 3
- *Installing 3DEXCITE software*, Page 4
- *Licensing 3DEXCITE software*, Page 15
- *Borrowing an 3DEXCITE license*, Page 17
- *Exchanging the license file*, Page 20

Prerequisites

System requirements

These requirements represent the capacity required to run 3DEXCITE DELTAGEN and 3DEXCITE DELTAVIEW and also for processing the 3D scenes that are loaded.

Only nVidia Profi graphic cards are currently capable of displaying all visual effects and shaders created with 3DEXCITE Software. This cannot be guaranteed with graphics cards from other manufacturers.

DELTAGEN supports the output of a greater color depth for monitors with 10-bit color depth. This is detected automatically if the monitor is connected to the system.

See also the constantly updated information on our Internet site.

Hardware requirements

Version		Minimum requirements	Recommendation
13.0	RAM	3 GB	8 GB (for Scale/Cluster: 16 GB) 1
	CPU	Windows: Pentium 4 (Prescott or higher)	Intel Xeon DP or MP, Intel Core 2 Duo / Quad / Extreme
		Linux: Nehalem	Sandy Bridge
	GPU (without Stellar!)	NVIDIA Quadro FX 4800 (for OpenGL and Look2 only)	NVIDIA Quadro FX 5800 - GT200 chipset
		NVIDIA Quadro FX 5800 - GT200 chipset (for RealTrace)	NVIDIA Quadro 6000 (plus G-Sync add-on card for Powerwall setup)
	GPU ALL	NVIDIA Quadro K5000 (plus Quadro-Sync add-on card for Powerwall setup)	NVIDIA Quadro K6000 (plus Quadro-Sync add-on card for Powerwall setup)
	Multi GPU	NVIDIA Quadro Plex 2200 D2 (2 x FX 5800)	NVIDIA Quadro Plex 7000 (2 x 6000)

Monitor resolution

Version	Component	Minimum requirements	Recommendation
13.0	DELTAGEN	1280 x 1024	1920 x 1200

Software requirements

Version	Component	Minimum requirements	Recommendation
13.0	DELTAGEN	Windows 7 (64-bit version)	

Recommended drivers

Version	Component	NVIDIA driver version	Certification document
13.0	DELTAGEN	341.44 ¹ (incl. Kepler-6000 cards)	available on request

¹ The Mosaic mode from NVIDIA currently supports OpenGL Rendering only. For GPU-accelerated RealTrace, further GPUs are necessary to ensure synchronization in the case of multi-display systems. The recommended NVIDIA Driver is also supported by former versions.

NVIDIA Control Panel

To ensure a correct monitor display, set the graphics card as follows:

Feature	Global Settings
Anisotropic filtering	Application controlled
Antialiasing - Gamma correction	Off
Antialiasing - Mode	Application controlled
Antialiasing - Transparency	Off
Buffer-flipping mode	Auto - select
Enable Overlay	Off
Maximum pre-rendered frames	3
Multi-Display/mixed GPU acceleration	Multiple/single display performance mode (according to requirements)
Stereo - enable	On/Off (according to requirements)
Threaded optimization	Auto
Triple buffering	Off
Vertical sync	Application controlled

For all Nvidia settings not listed here, we recommend that you keep the standard parameters unchanged.

Installing 3DEXCITE software

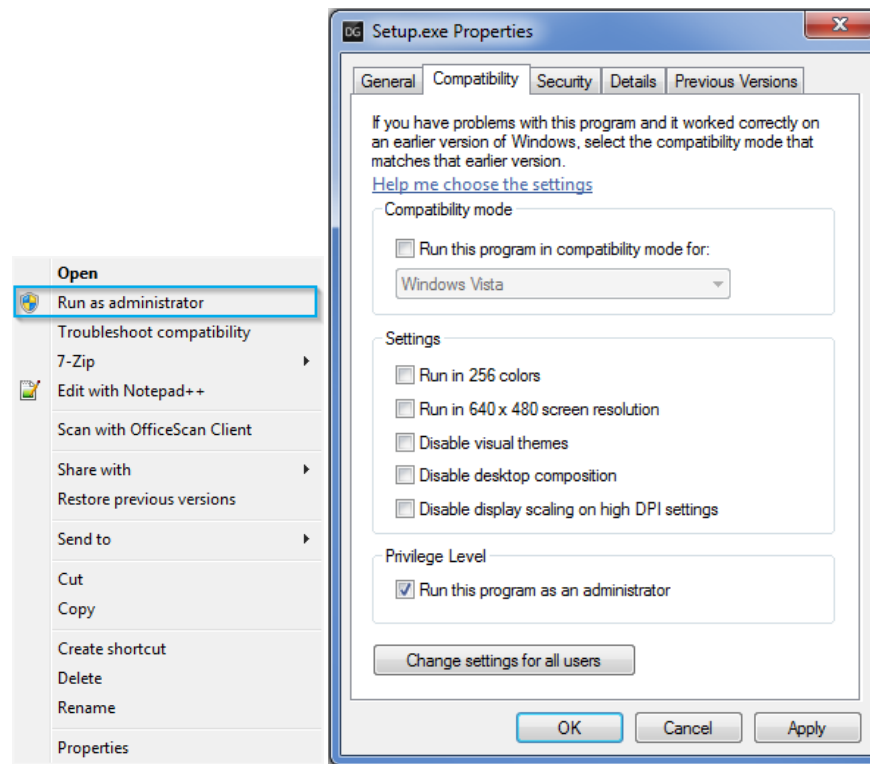
Important notes before starting installation:

- 3DEXCITE software works only with 64-bit Windows versions.
- Earlier versions of 3DEXCITE software can remain installed on your PC.

If you wish, you can uninstall 3DEXCITE software as follows:

**START/ALL PROGRAMS/DASSAULT SYSTEMES/3DEXCITE/DELTAGENx.Y/
UNINSTALL/UNINSTALL 3DEXCITE SOFTWARE**

- During installation, write processes take place in the installation directory. You therefore need corresponding write permission. Installation direct from the DVD is therefore not possible. We recommend that you copy the installation files to a local drive.
- You need the following administration rights to carry out the installation.
For security, we recommend that you select **RUN AS ADMINISTRATOR** from the context menu of the **Setup.exe** file (or that this is already set).



Selecting from the context menu

Setting via **PROPERTIES** -> **COMPATIBILITY** tab

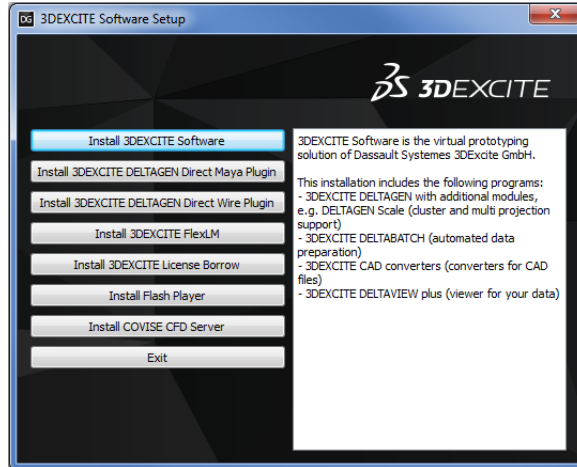
- If the computer is a FlexLM license server:

SELECT: **START/ALL PROGRAMS/DASSAULT SYSTEMES/3DEXCITE/
LICENSING/ SHUTDOWN LICENSES** TO EXIT THE FLEXLM LICENSE SERVICE.

Installation procedure

1. RUN THE Setup.exe FILE

You are now being guided through the following installation dialog:



If required, you can install not only the basis software but also additional contents. If you hold the mouse pointer over a selection field, you see information about the contents of the respective installation package.

2. CLICK A SELECTION FIELD TO START INSTALLATION OF THE CONTENT.

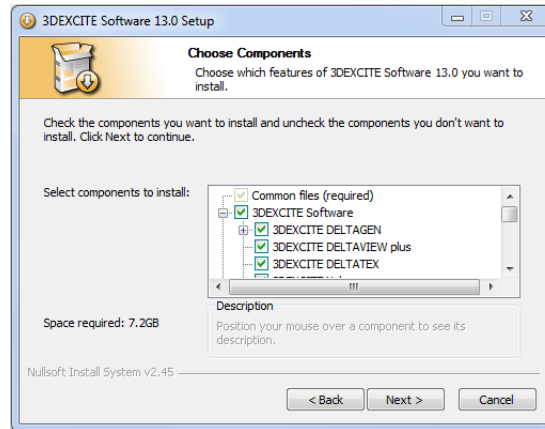
After you start installing a package (usually the 3DEXCITE software), the installation package is unzipped and the setup wizard opens.

3. CHECK WHETHER YOUR SELECTION IS CORRECT.

We recommend that you close all other programs to enable a smooth update of relevant system files without having to reboot the computer.

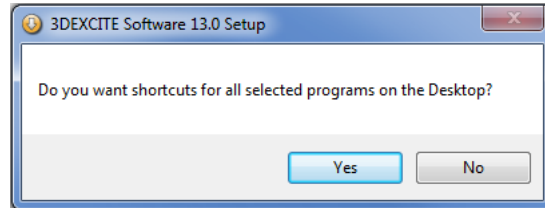


4. CHOOSE WHICH COMPONENTS OF THE 3DEXCITE SOFTWARE YOU WANT TO INSTALL.



5. CONFIRM WITH **NEXT >**,

You are asked if you want shortcuts to be created on the desktop for the programs you are installing.



6. SELECT THE INSTALLATION DIRECTORY

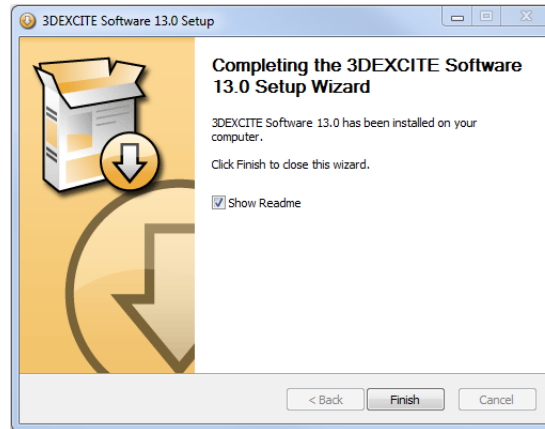
We recommend that you accept the suggested `C:\Program Files\Dassault Systemes\3DEXCITE\DELTAGENx.y`, where `x.y` stands for the program version to be installed. The background to this is the necessity to give standard users without administration rights write access in the program directory, which is not possible in the `C:\Program Files` directory.

If you have selected the 3DEXCITE DELTATEX component, the administration wizard starts during installation.

7. ENTER DETAILS FOR RUNNING 3DEXCITE DELTATEX IMMEDIATELY OR, IF YOU DON'T WANT TO RUN THE WIZARD YET AND CANCEL IT, AT ANY TIME LATER BY STARTING THE WIZARD IN THE PROGRAM MENU:

***START/ALL PROGRAMS/DASSAULT SYSTEMES/3DEXCITE/DELTAGENx.Y/
TOOLS /3DEXCITE DELTATEX ADMIN***

If you have installed the 3DEXCITE software correctly, the closing screen appears.




8. SELECT/DESELECT **SHOW README**
9. CLICK **FINISH**

The starting page of the software setup appears.

A text file containing the latest information on the program opens.

From the starting page of the software setup, you can now install other parts of the software package.

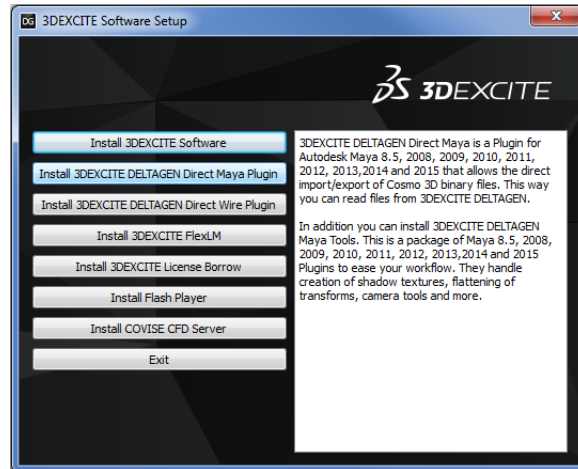
 After installing the Microsoft Visual Studio 2005 Redistribution Package, you may be asked to reboot the system. Reject a reboot since otherwise 3DEXCITE DELTAGEN will not be completely installed.

Installing other components: for example, DELTAGEN Direct Maya Plugin

Directly after installing the main program, or after rerunning the `setup.exe` file, you can install other components.

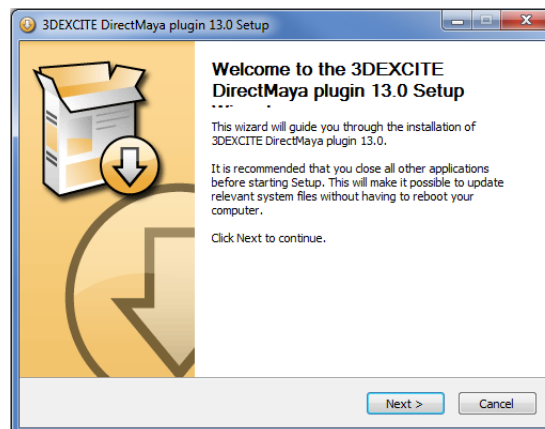
Installing the DirectMaya Plugin:

1. HOLD THE MOUSE POINTER OVER THE DIRECTMAYA PLUGIN SELECTION FIELD TO READ IMPORTANT INFORMATION.

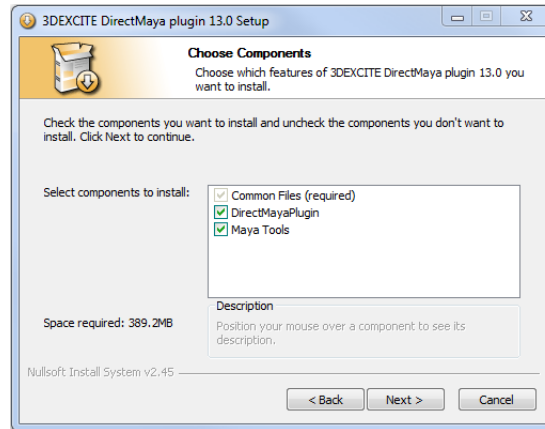


2. CLICK THE SELECTION FIELD

The installation package is unzipped and the setup wizard starts.

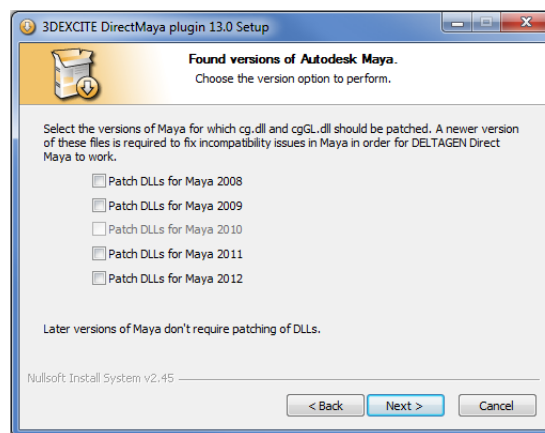


3. CHOOSE COMPONENTS YOU WANT TO INSTALL.



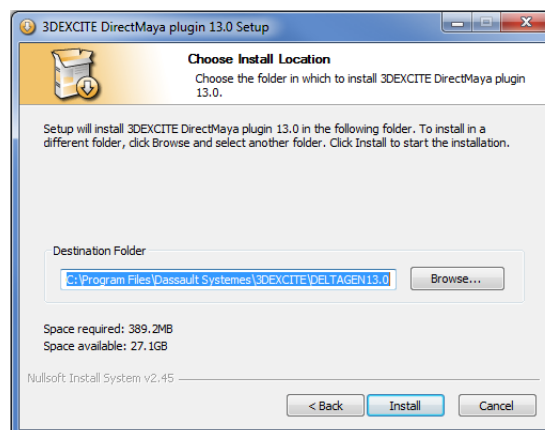
For pre-2013 Maya versions, 2 DLL files have to be exchanged in order that the plugin will work. The versions found are marked as being capable of activation.

If only Version 2013 or later is installed on the computer, no action is carried out.

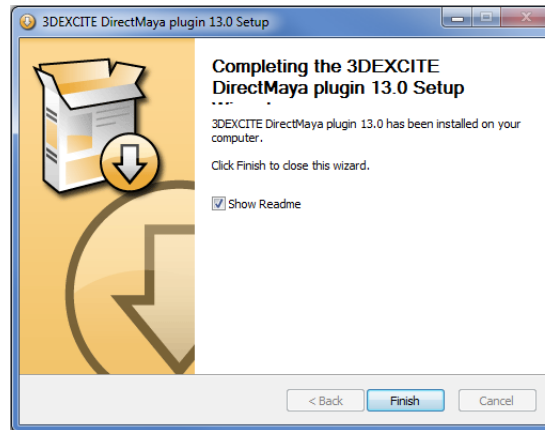


4. DEFINE THE INSTALLATION PATH.

We recommend the default setting, e.g., C:\Program Files\Dassault systemes\3DEXCITE\ for the English-language version of Windows 7.



The closing screen appears.



5. SELECT **SHOW README**

6. CLICK **FINISH**

You are returned to the starting page of the software setup.

A text file containing the latest information on the plugin opens.

From the starting page of the software setup, you can now install other parts of the software package.

Installing the license manager service

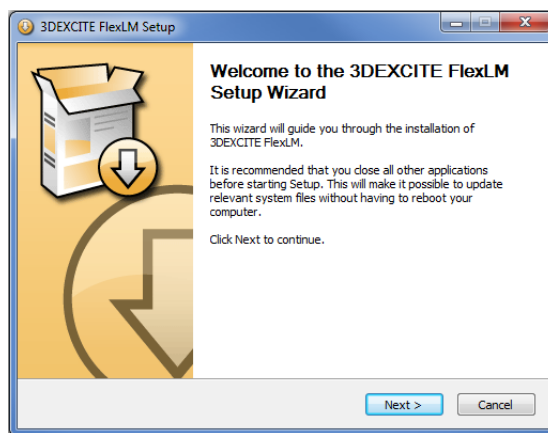
If the selected computer is to manage its 3DEXCITE license itself (as a so-called node-locked license) or as license server provide the license to other computers in the local network (as a so-called floating license), the 3DEXCITE FlexLM Service must be installed completely.

But if the computer is to borrow its license from another computer (a license server), only one system variable is created and filled with the data to be entered.

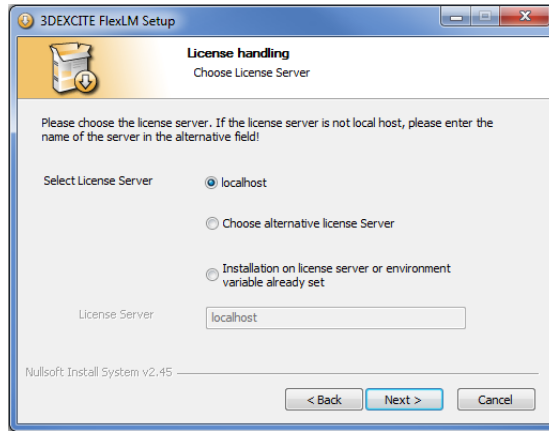
Hold the mouse pointer over the 3DEXCITE FlexLM selection field to read important information.

1. CLICK THE SELECTION FIELD

The installation package is unzipped and the setup wizard starts.



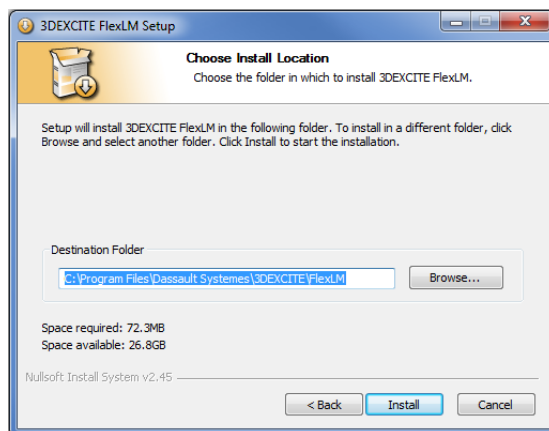
2. CLICK **NEXT >**
3. DEFINE HOW THE LICENSE IS TO BE HANDLED:
 - by itself (localhost = node-locked license)
 - by naming an alternative license server, or
 - no specification, i.e., no new entry for the environment variables, only installation on a computer designated as a license server, or installation for local use if the environment variable does not have to be set (any more).



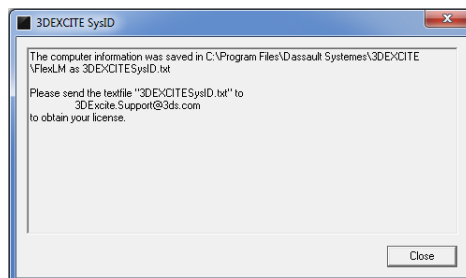
Further procedures: **LOCALHOST**

4. DEFINE THE INSTALLATION PATH TO BE USED, E.G., `C:\Program Files\Dassault Systemes\3DEXCITE\FlexLM` FOR THE ENGLISH-LANGUAGE VERSION OF WINDOWS 7.

The specified folder is also the location for the license file to be generated by 3DEXCITE, which has to be stored precisely there.

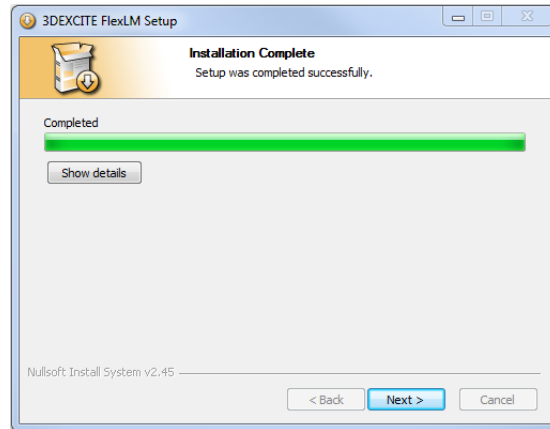


During installation of the FlexLM service, the system information necessary for generating the license file is automatically used to create the `3DEXCITESysID.txt` file, which is stored in the specified folder.

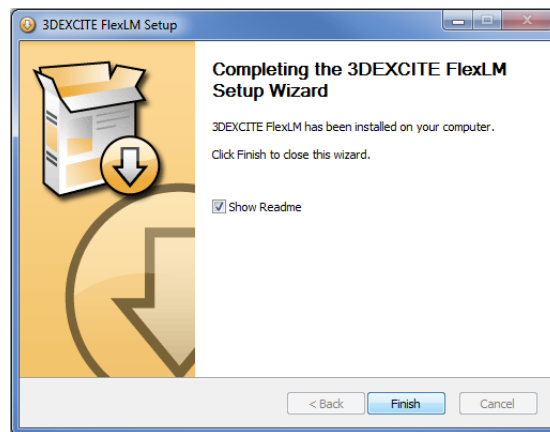


The system variable `RTTLM_LICENSE_FILE` is created and given the entry `@localhost`.

When the setup is complete, you can view installation details.



Installation is now successfully completed.



5. SELECT **SHOW README**
6. CLICK **FINISH**

You are returned to the starting page of the software setup.

A text file containing the latest information on the FlexLM program opens.

From the starting page of the software setup, you can now install other parts of the software package.

Further procedures:

CHOOSE ALTERNATIVE LICENSE SERVER

4. UNDER **LICENSE SERVER**, ENTER THE NAME OF THE COMPUTER TO BE USED AS THE LICENSE SERVER.

This name is stored as a value in the `RTTLM_LICENSE_FILE` system variable. In this case, be sure to consult your local IT service / system administrator for the corresponding details.

If access to the license server is via a shared port only (as preset for example in the case of a redundant server system in the license file), this must precede the computer name. In this case:

ADD (MANUALLY) THE VALUE OF THE SYSTEM VARIABLE AT THIS PLACE, IN THE FOLLOWING FORMAT: **xxx@Servername**

xxx is the port number.

Further procedures:

***INSTALLATION ON LICENSE SERVER OR ENVIRONMENT VARIABLE
ALREADY SET***

→ *Further procedures: LOCALHOST*, Page 12

Here, only the service is installed without making an entry for the RTTLM_LICENSE_FILE system variable.

Licensing 3DEXCITE software

In order to be able to use this 3DEXCITE software, you need a license issued by 3DEXCITE. There are two types of license:

- Local licenses (node-locked)
- Server licenses (floating)

For licensing and all further configuration steps, you need administration rights.

Install a local license (node-locked)

1. Install the FlexLM software in the *LOCALHOST* variant.
During installation, a unique system ID (SysID) is created as a text file with the name `3DEXCITESysID.txt`.
The path in which this file is located is the FlexLM installation path.
2. Send an e-mail with the generated file `3DEXCITESysID.txt` as an attachment to `3DEXCITE.Support@3ds.com`.
You will receive your license by e-mail as a file.
The general license is `RTTLM.D Lic`.

3. Save these files to the license directory, which you can open by selecting the following:

***START/ALL PROGRAMS/DASSAULT SYSTEMES/3DEXCITE/DELTAGENx.Y/
LICENSING / LICENSE FOLDER***

4. Then select

***START/ALL PROGRAMS/DASSAULT SYSTEMES/3DEXCITE/DELTAGENx.Y/
LICENSING / START LICENSES***

This completes the licensing of the 3DEXCITE software.



The following environment variable was set in the *LOCALHOST* installation type on the system:

`_ RTTLM_LICENSE_FILE`

This contains information showing where the license is stored. You can view and edit these settings in the advanced system settings. If you have any questions, consult your IT Support.

Install a server license (floating)

1. Install the FlexLM software on the server.
During installation, a unique system ID (SysID) is created as a text file with the name `3DEXCITESysID.txt`.
The path in which this file is located is the FlexLM installation path.

2. Send the generated file `3DEXCITESysID.txt` to `3DEXCITE.Support@3ds.com`.
You will receive the license as a file by e-mail.
The general license is `RTTLMD.lic`.
3. Save these files to the license directory, which you can open by selecting the following:
***START/ALL PROGRAMS/DASSAULT SYSTEMES/3DEXCITE/DELTAGENx.Y/
LICENSING / LICENSE FOLDER***
4. Install the 3DEXCITE software on the workstations.
5. DEFINE THE FOLLOWING ENVIRONMENT VARIABLE ON THE WORKSTATIONS:
RTTLMD_LICENSE_FILE IF THIS HAS NOT ALREADY BEEN DONE DURING
INSTALLATION UNDER ***INSTALL 3DEXCITE FLEXLM - VARIANT CHOOSE
ALTERNATIVE LICENSE SERVER***

The value of every environment variable is
`[portnumber]@licenceservername,`

where specifying the port number is optional if the license file already contains a corresponding entry (e.g. in the case of a redundant server system).



With the `FLEXLM_TIMEOUT` system variable, you can define how long the search for licenses takes. If the searched-for licenses are not available, you can use this system variable to shorten the startup time of DELTAGEN and DELTAVIEW plus.

Values are specified in milliseconds between 0 and 2,147,483,647. If the variable is not set, 100,000 milliseconds, i.e. 100 seconds, are set as the waiting time.

Borrowing an 3DEXCITE license

With 3DEXCITE License Borrow, you can borrow a license from a server (floating server license). This is possible for both DELTAGEN and other modules and plugins.

Conditions and notes

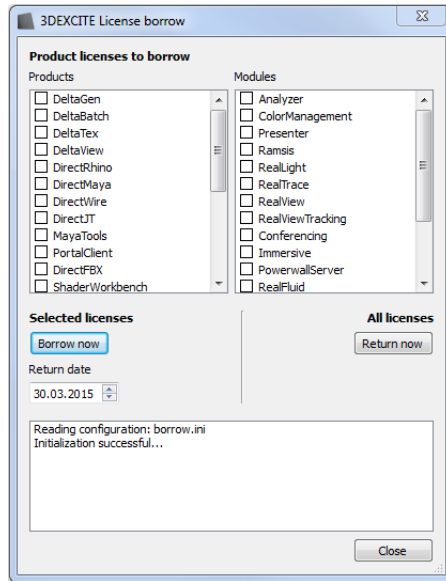
- **3DEXCITE LICENSE BORROW** has to be installed on the local computer only (the one that wants to borrow the license). It does not have to be installed on the server too.
- The **FLEXLM** service does not have to be installed on the local computer!
- Only licenses stored in the license file of the server can be borrowed.
- The borrowing applies only to the registered user name, i.e., the license is available only to this user name following request and activation on the PC.
- The license server must be reachable for the borrowing and return procedures.
- The licenses can be borrowed for up to 31 days.
- After borrowing, the borrowed license is no longer available on the server until it is returned.

Borrowing licenses

1. START THE BORROWING PROCESS IN THE PROGRAM MENU **START/ALL PROGRAMS/DASSAULT SYSTEMES/3DEXCITE/DELTAGENx.y/> TOOLS/3DEXCITE LICENSE BORROW**

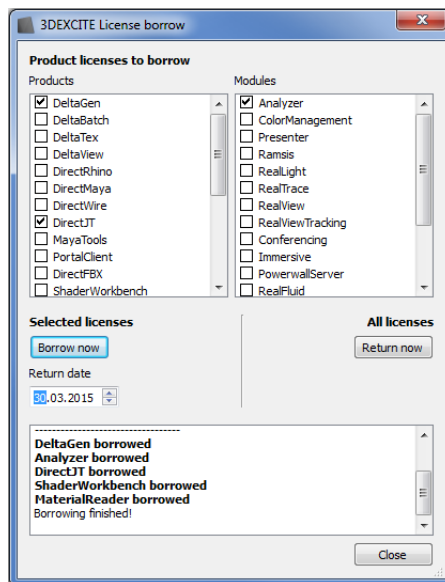
The dialog box lists all programs, modules, plugins, and converters supported by the 3DEXCITE software.

2. CLICK A SELECTION BOX TO SELECT A PRODUCT OR MODULE (CLICK AGAIN TO UNSELECT IT)
3. SET THE RETURN DATE FOR THE LICENSE(S) (MAX. 31 DAYS IN THE FUTURE, DEFAULT THE NEXT DAY)
4. SELECT **BORROW NOW** TO START BORROWING THE SELECTED LICENSES.

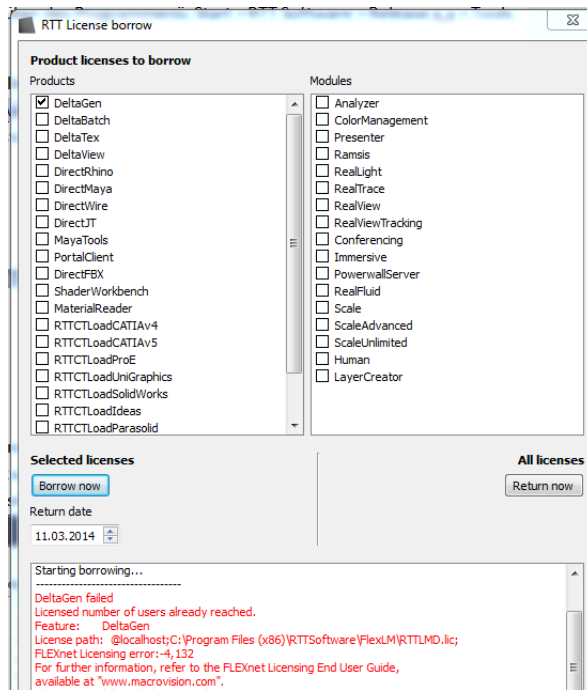


Whether or not a license will actually run depends on whether the selected component has been installed on the local computer!

If borrowing is successful, this is confirmed in the info box.



If no license is available, this is shown with an error message:



At program start, you are informed how long the license is still available (so long as you do not unselect this message).

Returning licenses

1. START THE RETURN PROCESS IN THE PROGRAM MENU: **START/ALL PROGRAMS/DASSAULT SYSTEMES/3DEXCITE/DELTA GENx.y/ TOOLS/3DEXCITE LICENSE BORROW**
2. CLICK **RETURN NOW** TO RETURN ALL BORROWED LICENSES BEFORE EXPIRY OF THE RETURN DATE. A SELECTIVE RETURN IS NOT POSSIBLE.

Following expiry of the return date, the license is automatically available on the license server without the user having to return it.

Exchanging the license file

In case you get a new license file, either for the server or the local machine, you can do the exchange of the license on the running system.

1. OPEN THE FLEXLM FOLDER.
BY DEFAULT THIS IS FOUND UNDER
C:\Program Files\Dassault Systemes\3DEXCITE\DELTAGENx.y\FlexLM.
2. COPY THE NEW RTTLM D LICENSE FILE INTO THE FLEXLM FOLDER,
OVERWRITING THE EXISTING ONE.
SHUTDOWN THE LICENSES WITH
3. **shutdown_licenses.bat** (RUN AS ADMINISTRATOR) IN THAT FOLDER OR
VIA
4. **START/ALL PROGRAMS/DASSAULT SYSTEMES/3DEXCITE/DELTAGENx.y/
LICENSING/SHUTDOWN LICENSES.**
5. START THE SERVICES WITH **start_licenses.bat** (RUN AS ADMINISTRATOR)
OR VIA
**START/ALL PROGRAMS/DASSAULT SYSTEMES/3DEXCITE/DELTAGENx.y/
LICENSING/START LICENSES.**

Again a prompt will appear.

The license server is now up and running again.